

Corporate Structure

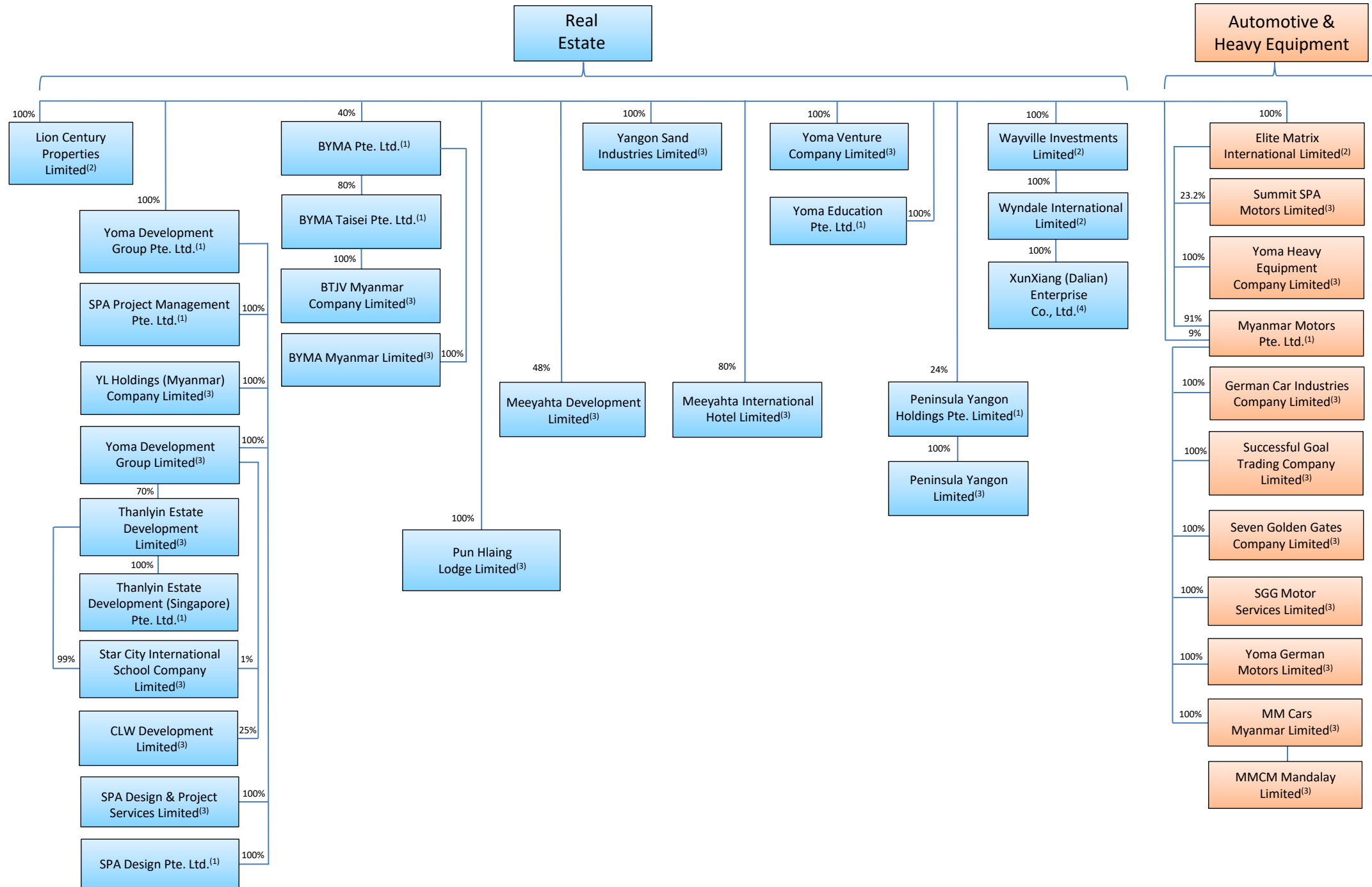
(As at 15 July 2022)



Yoma Strategic Holdings Ltd.⁽¹⁾

100%

Yoma Strategic Investments Ltd.⁽¹⁾



Notes :

- (1) Incorporated in Singapore
- (2) Incorporated in British Virgin Islands
- (3) Incorporated in Myanmar
- (4) Incorporated in People's Republic of China

Corporate Structure

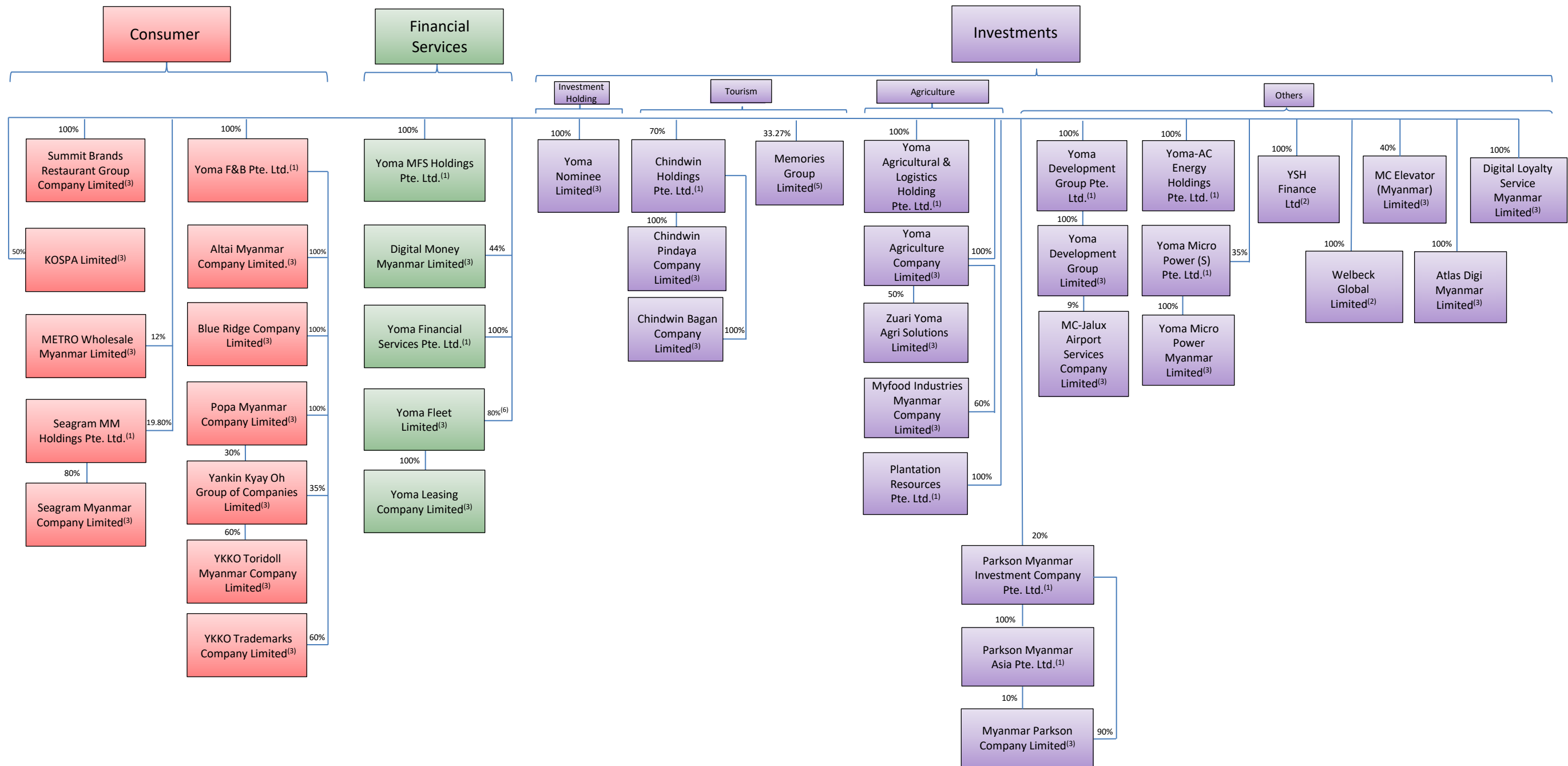
(As at 15 July 2022)



Yoma Strategic Holdings Ltd.⁽¹⁾

100%

Yoma Strategic Investments Ltd.⁽¹⁾



Notes :

- (1) Incorporated in Singapore
- (2) Incorporated in British Virgin Islands
- (3) Incorporated in Myanmar
- (4) Incorporated in People's Republic of China
- (5) Listed on the Catalist board of the SGX-ST
- (6) 100% held through Myanmar Motors Pte. Ltd., a wholly-owned subsidiary of Yoma Strategic Investments Ltd.